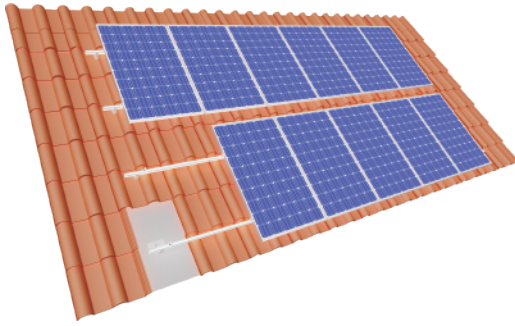


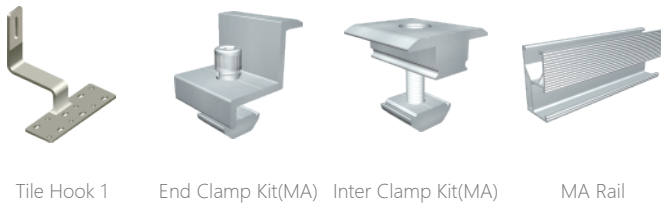
Overview



MRac Tile Roof Hook Solar PV Mounting System is applied tile roof residential and commercial solar projects. The system can achieve stable and strong connection between the roof support structure and solar modules with modular Patented design. Pre-assembled kits save the installation time and cost onsite.



Components Configuration



Tile Hook 1 End Clamp Kit(MA) Inter Clamp Kit(MA) MA Rail

Features

- **Applicable for Different Metal Roofs**
Design project by project, selecting configuration of mounting system components flexibly.
- **Save Installation Time and Cost**
Pre-assembled components and clear installation manuals are supplied to save the onsite installation time and cost, lead to better Rol.
- **Compatible to Different Types of Solar Modules**
Compatible to most kinds of framed 60-cell, 72-cell, half-cut cells modules and frameless modules.

Technical Parameter

Product Name	Tile Hook	Design Standard	AS/NZS 1170, DIN 1055, JIS C8955: 2017,
Installation Site	Pitched Roof		International Building Code IBC 2009,
Foundation	Tile, Flat Tile, Slate Tile, Asphalt Shingle Tile		California Building Code CBC 2010;
Tilt Angle	5-45°	Hook Material	AL6005-T5(Anodized)
Wind Load	60m/s	Fastener	SUS304 & Zinc-Nickel Alloy Electroplated Steel
Snow Load	1.6kN/m ²	Small Components	AL6005-T5(Anodized)
Applicable Solar Module	Framed or Frameless	Color	Silver or Customized Color
Panel Layout	Portrait or Landscape	Warranty	10-year warranty

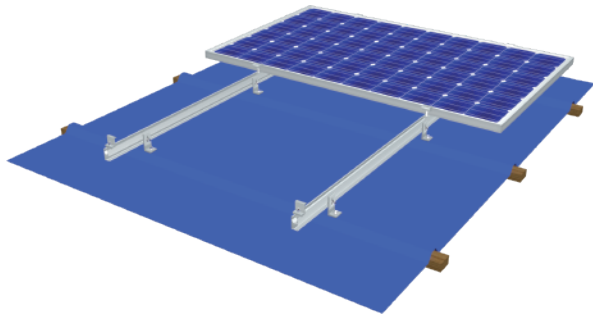
Certified by TUV, SGS and qualified consultants in AU, JP, ASEAN, CN, UK, EU, US



Optional Hooks



Overview



MRac L feet Kit and Hanger Bolt Kit are applied in most Corrugated Metal Roof commercial and industrial solar projects. The system can achieve stable and strong connection between the roof support structure and solar modules with modular Patented design. Pre-assembled kits save the installation time and cost on site.



Technical Parameter

System Name	MRac L Feet Kit & Hanger Bolt Kit	Design Standard	AS/NZS 1170, DIN 1055, JIS C8955: 2017,
Installation Site	Pitched Roof		International Building Code IBC 2009,
Foundation	Trapezoidal Roof		California Building Code CBC 2010;
Tilt Angle	0°	Rail	AL6005-T5(Anodized)
Wind Load	60m/s	Fastener	SUS304 & Zinc-Nickel Alloy Electroplated Steel
Snow Load	1.6KN/m ²	Small Components	AL6005-T5(Anodized)
Applicable Solar Module	Framed or Frameless	Color	Silver or Customized
Panel Layout	Portrait or Landscape	Warranty	10-Year Warranty

Certified by TUV, SGS and qualified consultants in AU, JP, ASEAN, CN, UK, EU, US

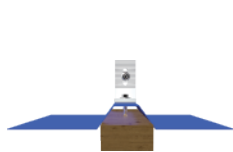


Components Data

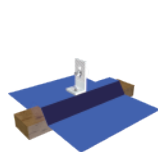
Components	L Feet(black or silver), EPDM Pad, Cross Module, Spring Washer M8 , Flat Washer M8, Sharp-Point Wood Screw M6*80, Hexagon Socket Head Bolt M8*25
Package	40sets/small carton, 160sets/large carton



L Feet Kit



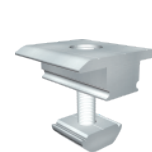
Installation Picture



Installation Picture



End Clamp Kit(MA)



Inter Clamp Kit(MA)



MA Rail

Components Data

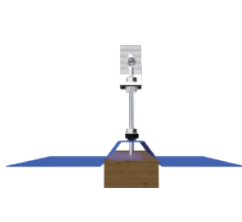
Components	L Feet, Hanger Bolt M10*200, EPDM Pad M10, Washer M8, Cross Module, Conical Washer M8, Hexagon Socket Head Bolt M8*25
Package	20sets/small carton, 80sets/large carton



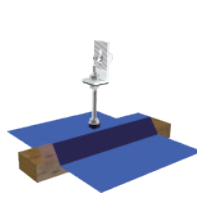
Hanger Bolt



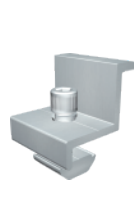
Hanger Bolt Kit



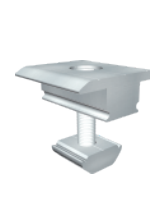
Installation Picture



Installation Picture



End Clamp Kit(MA)

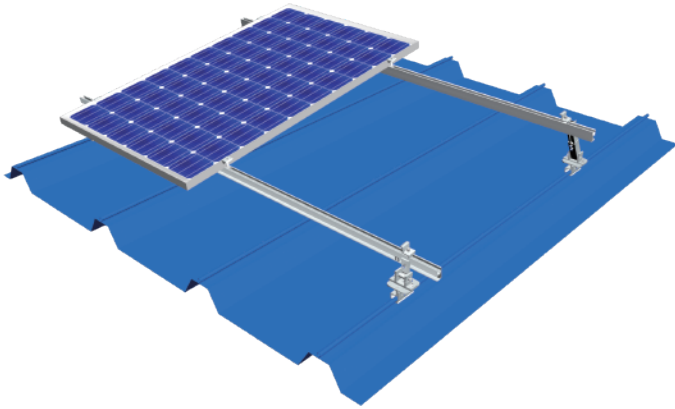


Inter Clamp Kit(MA)



MA Rail





MRac Adjustable Support Kit Solar PV Mounting System are applied in most Corrugated Metal Roof and Flat Roof commercial and industrial solar projects. The system can achieve stable and strong connection between the roof support structure and solar modules with modular Patented design. Adjustable angles can reduce the stock SKU and flexible for onsite installation. Pre-assembled kits save the installation time and cost onsite.



Components



Front Support



Adjustable Back Support



End Clamp Kit(MA)



Inter Clamp Kit(MA)



MA Rail

Features

– Applicable to Different Metal Roofs

Using different clamps according to the specific circumstance of each project, the Adjustable Support System is applicable to various shaped metal roofs.

– Save Installation Cost and Time

The unique design realizes easy installation and installation manual is provided.

– Compatible to Different Types of Solar Modules

The Adjustable Support System is compatible with different types of solar modules, including 60-cell, 72-cell, framed or frameless modules.

Technical Parameter

System Name	Adjustable Support	Design Standard	AS/NZS 1170, DIN 1055, JIS C8955: 2017,
Installation Site	Pitched Roof		International Building Code IBC 2009,
Foundation	Metal Roof		California Building Code CBC 2010;
Tilt Angle	10-60°	Rail	AL6005-T5(Anodized)
Wind Load	60m/s	Fastener	SUS304 & Zinc-Nickel Alloy Electroplated Steel
Snow Load	1.6KN/M3	Small Components	AL6005-T5(Anodized)
Applicable Solar Module	Framed or Frameless	Color	Silver or Customized
Panel Layout	Landscape or Portrait	Warranty	10-Year Warranty

Certified by TUV, SGS and qualified consultants in AU, JP, ASEAN, CN, UK, EU, US

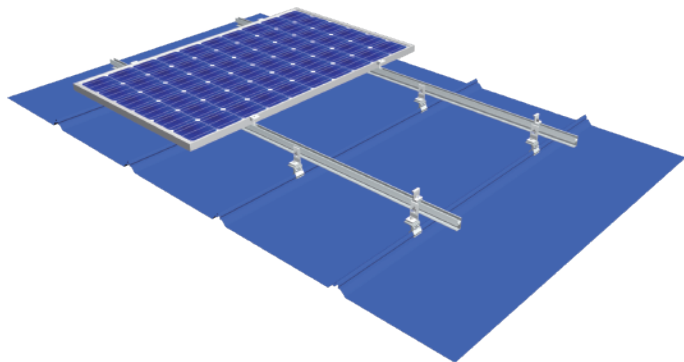


Components Parameter

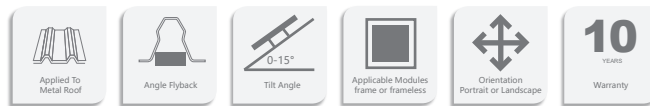
Components	Components: Front Support, Adjustable Back Support, EPDM Rubber, Hexa Self-Tapping Screw ST6.3*25
Tilt Angle	10-15°; 15-30°; 30-60°



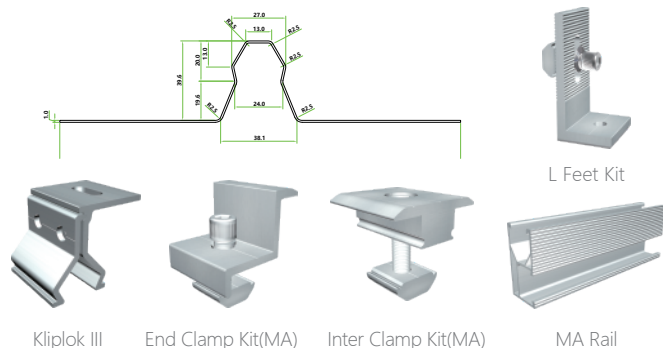
Overview



MRac Kliplik is mainly applied to Kliplik, and its material is AL6005-T5. With its professional design, it can realize the perfect connection between roof support and roof to meet customer installation requirement. Professional solution and structure design can save your installation time and cost. Moreover, Patented and unique design can bring you a good installation experience.



Component



Advantage

- Applicable for different metal roofs
According to customer requirement, choose different roof mounting system flexibly;
- Save installation time and cost
Save the installation time and cost by offering installation manual and solution;
- Compatible to different types of solar modules
Free and flexible to choose different types of solar modules.

Technical Parameter

System name	MRac Kliplik	Design Standard	AS/NZS 1170, DIN 1055, JIS C8955: 2017,
Installation Site	Pitched Roof		International Building Code IBC 2009,
Foundation	Trapezoidal Metal Roof Support		California Building Code CBC 2010;
Tilt Angle	0-15°	Material	Q235B(Hot-Dip Galvanized) & AL6005-T5(Anodized)
Wind Load	60m/s	Fastener	SUS304&Zinc-Nickel Alloy Electroplated Steel
Snow Load	1.6KN/m ²	Small Components	AL6005-T5(Anodized)
Applicable Module	Framed or Frameless	Color	Silver or Customized
Panel Orientation	Portrait or Landscape	Warranty	10 Years

Certified by TUV, SGS and qualified consultants in AU, JP, ASEAN, CN, UK, EU, US



Applicable Kliplik Roof Support



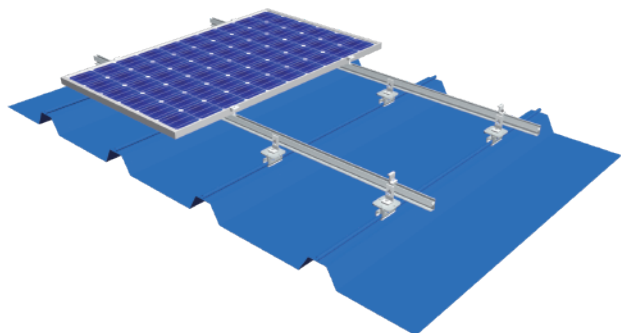


do My Best, to be the best!

MIBET ENERGY

MRac Standing Seam Metal Roof Solar PV Mounting System

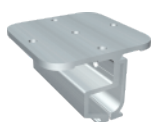
Overview



MRac Standing Seam Metal Roof Solar PV Mounting System is applied to Standing Seam Metal Sheet Roof commercial and industrial solar projects. The system can achieve stable and strong connection between the roof support structure and solar modules with modular Patented design. Pre-assembled kits save the installation time and cost onsite.



Components



Seppan Clip



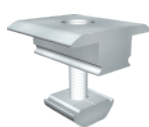
L Feet Kit



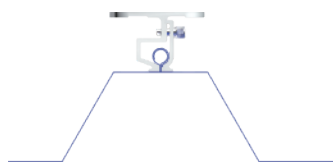
MA Rail



End Clamp Kit(MA)



Inter Clamp Kit(MA)



Features

- **Applicable for Different Metal Roofs**
Design project by project, selecting configuration of mounting system components flexibly.
- **Save Installation Time and Cost**
Pre-assembled components and clear installation manuals are supplied to save the onsite installation time and cost, lead to better RoI.
- **Compatible to Different Types of Solar Modules**
Compatible to most kinds of framed 60-cell, 72-cell, half-cut cells modules and frameless modules.

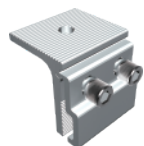
Technical Parameter

System Name	MRac Standing Seam Roof Support	Design Standard	AS/NZS 1170, DIN 1055, JIS C8955: 2017,
Installation Site	Pitched Roof		International Building Code IBC 2009,
Roof Type	Trapezoidal Metal Roof Support		California Building Code CBC 2010;
Tilt Angle	0-15°	Material	Q235B(Hot-Dip Galvanized) & AL6005-T5(Anodized)
Wind Load	60m/s	Fastener	SUS304&Zinc-Nickel Alloy Electroplated Steel
Snow Load	1.6KN/m ²	Small Components	AL6005-T5(Anodized)
Applicable Solar Module	Framed or Frameless	Color	Silver or Customized
Panel Layout	Portrait or Landscape	Warranty	10-Year Warranty

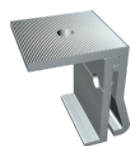
Certified by TUV, SGS and qualified consultants in AU, JP, ASEAN, CN, UK, EU, US



Applicable Trapezoidal Roof Support



Standing Seam 8



Standing Seam 9



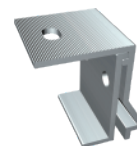
Standing Seam 10



Standing Seam 11



Standing Seam 14



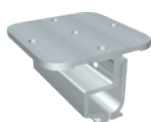
Standing Seam 15



Standing Seam 20



Standing Seam 22



Seppan Clip



Standing Seam Multi Clamp Kit L



Facade Standing Seam Clamp Kit 11

迈贝特 (厦门) 新能源有限公司 XIAMEN MIBET NEW ENERGY CO.,LTD.

选择绿色 选择迈贝特 | do My Best, to be the best!

TEL: +86 592 3754999 • FAX: +86 592 6771575 • E-mail: sales@mbt-energy.com • www.mbt-energy.com • Add: No.69,Xintian Road,Jimei District,Xiamen,China

